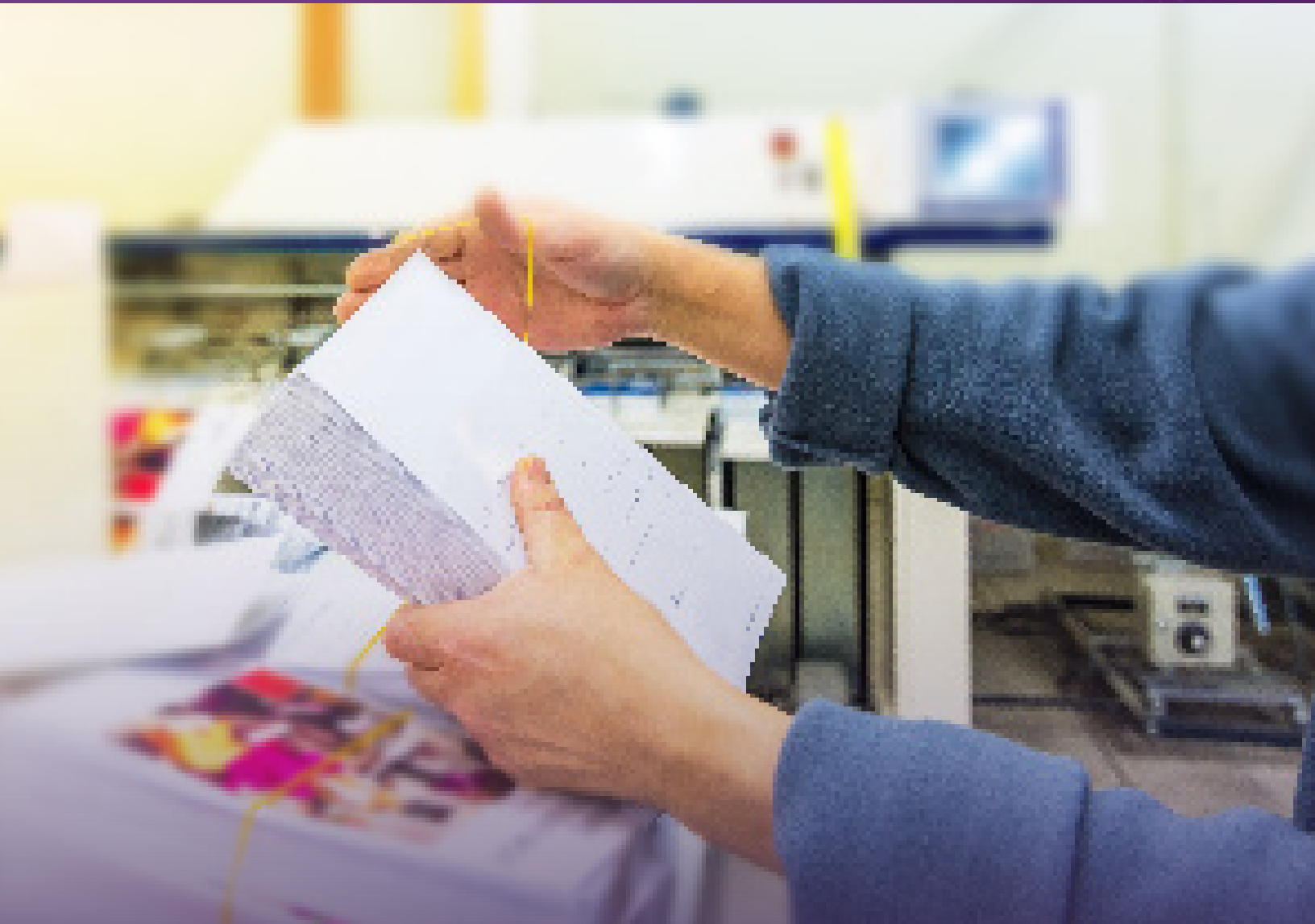


SOLUTION BROCHURE

# Datacard® DX Series System

DX5100™

The stand-alone card delivery system that truly stands out



**ENTRUST**

SECURING A WORLD IN MOTION



## Datacard® DX Series System

The Datacard® DX5100 Card Delivery System is the perfect system for high-volume issuers who demand reliability, uptime, and efficiency. This system seamlessly handles the realities of today's card operation — including smaller job sizes, quick turns, and highly targeted consumer messages. The DX5100 System gives you real-world productivity, control, and accuracy at speeds up to 3,500 CPH. Plus, it includes the Datacard advantage of modularity and flexibility.

# High-impact, targeted card mailings

## DATACARD® DX5100 CARD DELIVERY SYSTEM

Create highly personalized 1:1 mailings with messages and visuals that resonate with cardholders. Build the perfect system to meet your needs.

### Creativity Delivered

#### Base system includes:

- System Controller
- High Capacity Input Gen 2
- Standard Capacity Output Gen 2
- Multi-card Buffer Gen 2
- Card Affixer Gen 2
- Form Buffer Gen 2
- Form Folder/Flipper Gen 2

#### Optional base system modules:

- Magnetic Stripe Reader Gen 2
- Barrel Dual Smart Card Reader Gen 2
- Card Scanner Gen 2
- Label Affixer Gen 2
- Color Label Printer Gen 2
- Flex-Form Gen 2
- Pre-printed Form Feeder
- Card Carrier Sorter

#### Envelope inserter base system includes:

- Controller
- Double Track
- Envelope Feeder
- DC Interface

#### Optional inserter modules:

- Sheet Feeder/Folder
- Accumulator/Folder
- Card Carrier Feeder
- Insert Feeder
- Envelope Verification
- Standard Divert
- Envelope Printing/Franking
- High Capacity Vertical Conveyor

# Drive real-world productivity

The Datacard® DX5100™ Card Delivery System is uniquely designed to use the same software and data set ups as the Datacard® MX Series Systems for ease of use and implementation, allowing you to focus on card attaching and envelope inserting. This stand-alone card delivery system brings quality and modularity to seamlessly meet changing consumer preferences, and it is the perfect compliment to any MX Series System.

**Streamlined data flow:** Both card personalization and card delivery systems use one string of data providing continuity for data set ups and file names — resulting in increased data security and reduced IT formatting.

**Maximum uptime:** With built in automation for digital changeovers of job set-ups throughout the process, you can save time with minimal operator intervention while maintaining maximum system uptime and data security. Dynamic key automation of card placement, folds, selective inserting, and diverts helps build larger jobs sizes and improves uptime. Realize new levels of efficiency with this system built for next generation throughput.

**Innovative technology:** Engineered to support unique technologies such as the Card Carrier Sorter Module, which reduces the frequency of stops to help drive larger batch sizes, and the Color Label Printing Module, which prints on-demand, full-color card labels.

**Feature-rich functionality:** Enhanced functionality allows you to print and fulfill any mailing, any way you choose. Features include near-edge full-color printing of pre-printed card carriers, full sheet, and standard insert options and mail divert capabilities to rank important deliveries and organize output.

**Mail Package Integrity:** Verification options throughout the entire system to help ensure the correct card, carrier, and inserts are delivered to the right cardholder, every time. Full package integrity from card to envelope.



# Make a lasting impression

ACCOUNT # XXXX-XXXX-XXXX-5505

**Activate Now**  
TO START EARNING REWARDS!

TIMOTHY JAMES ANDERSON  
101 ABC WAY  
CITY, STATE, ZIP

CALL 1 123 334 5667 or visit  
[www.mycreditcard.com/activate](http://www.mycreditcard.com/activate)


Hi Timothy,

Meet your new, exclusive financial card. Your upgraded card offers expanded benefits with even more cash back on everyday spending, better perks, and improved security. All with no annual fee.

Start earning today with our limited time offer to earn \$25 cash back the first two months when you spend \$500 or more. See inside for details.

**ENJOY THESE BENEFITS AND MORE:**

- No annual fee
- Accepted worldwide; no foreign transaction fees
- 1% cash back on every purchase, every day
- 3% cash back on dining and travel



**MOBILE ACCESS**  
Sign in to your account anytime, anywhere

**FREE FICO SCORE**  
Free credit score available anytime

**FRAUD PROTECTION**  
We provide 24/7 monitoring and prevention

**CHIP SECURITY**  
EMV chip personalization improves transaction security

## THE *Priorities*

back in the first two months.

& Earn \$25

& Earn \$25

**avings**  
[card.com/save](http://card.com/save) to learn more

• **Activate Today**  
1 123 334 5667

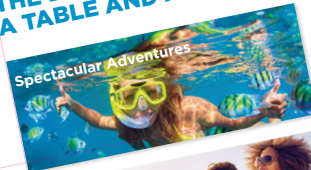
## *Fund Your Getaway*

### Cardmember Review

"This card has helped my family take trips we never thought possible! Thank you!"

## THE BEST MOMENTS HAPPEN AROUND A TABLE AND AROUND THE GLOBE

### Spectacular Adventures



### Family and Friends



### Good Food



## TAKE ADVANTAGE OF DINING AND TRAVEL PERKS

3% cash back on all dining and travel purchases is just the start. Book through our perks portal for VIP negotiated discounts on travel and accommodations.



# Put the card carrier to work

Capitalize on valuable card carrier real estate to deliver personalized marketing messages that encourage card activation and use. Include promotional coupons, special offers, advertising, and cross-selling opportunities to grow your revenue streams. Target images that reflect the cardholder's lifestyle and interests. Grab attention with bold color graphics to create even more impact. On-demand color printing eliminates the need for pre-printed forms and gives you limitless possibilities to make your carriers come alive. With larger card carriers, you now have more opportunity for customized 1:1 marketing that can help you build stronger relationships with your cardholders.

## Customized Card Carriers

**Support market trends:** Meet the growing vertical card trend without limiting job sizes based on card orientation. Dynamically place cards on carriers horizontally and vertically to meet customer requests.

**On-demand color printing:** High-quality on-demand printing helps reduce the need for large inventories of pre-printed forms and color labels. Add visual impact and promotional content to your mailings.

**Larger form sizes:** Additional real estate is perfect for printing expanded terms and conditions and adding cross-promotional content to your mailers.

**Print any carrier, any way you choose:** No matter what your card program requires, you have the flexibility to print full-color carriers on demand or feed fully pre-personalized card carriers into the system for a complete high-impact mail piece.

**Card carrier integrity:** Verification options that help ensure the correct card and carrier are matched to ensure the integrity of the mail package.

**Regroup production to drive uptime & efficiency:** Card carrier sorting provides the flexibility to remove inefficiencies from the inline process and/or reorganize finished card carriers to maximize production.

# Intelligent automated envelope insertion

The feature-rich choices and flexibility of our portfolio empower you to capitalize quickly on evolving market demands and turn the threat of change into opportunities for growth. The heart of the Datacard® DX5100™ Card Delivery System shares many of the same components featured in our card issuance systems and inline card delivery systems. This means you can rely on one trusted source for complete card-to-envelope production.

## Robust Envelope Insertion

You can produce ready-to-mail packages completely inline with the envelope insertion module for the Datacard® DX5100™ Card Delivery System. This robust envelope insertion system packages all mailing materials together and provides the optimal security you need to verify that the right information — legal terms and conditions, marketing materials, and more — is inserted into the right envelope.

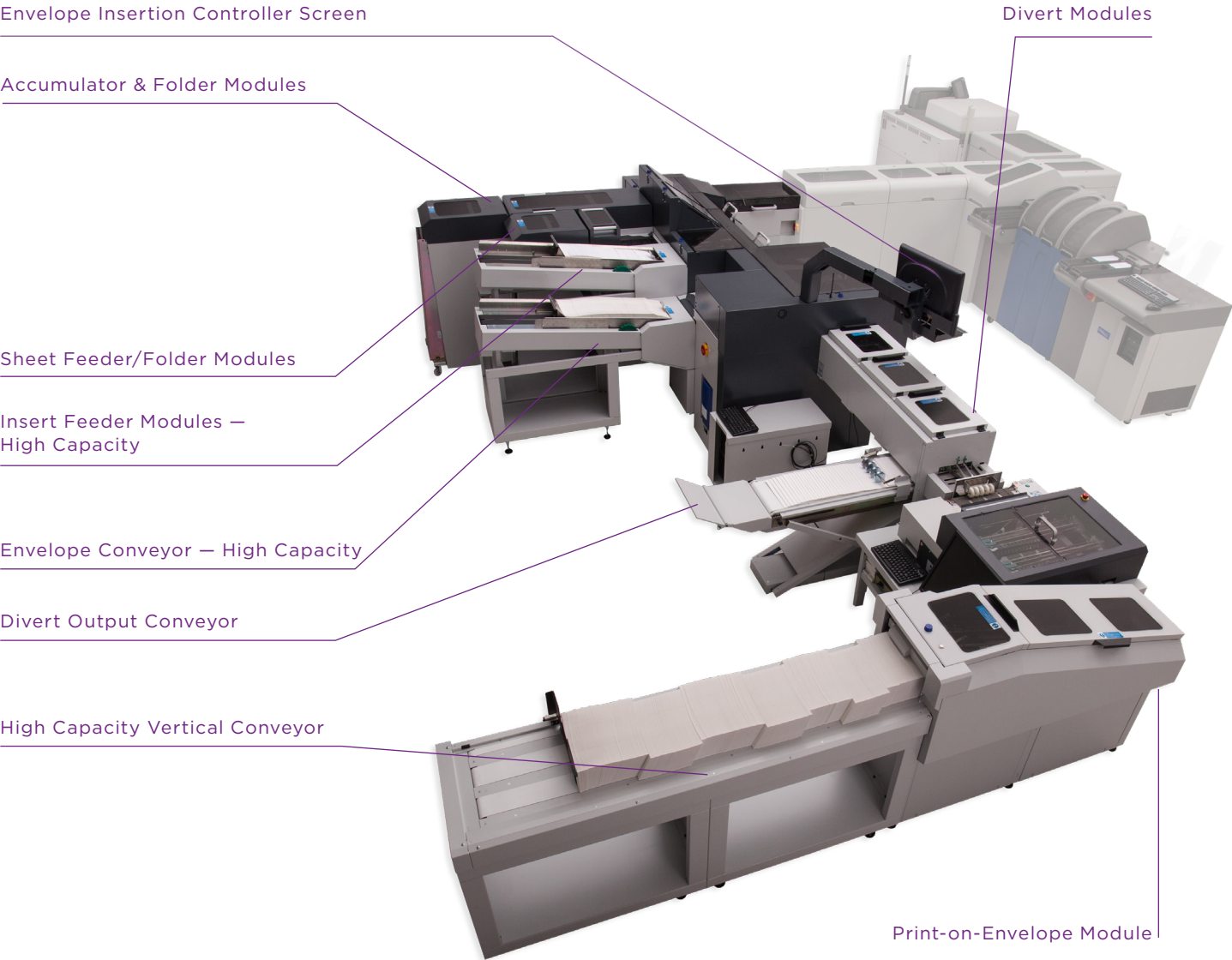
**Achieve high productivity:** Drive continuous efficiency with selective insertion, envelope packaging, and sealing with built-in automation throughout the process, helping reduce time between jobs with minimal operator intervention.

**Customized packages:** Offers a wide range of insert options to select from, along with an on-demand print feature to personalize a message or graphic on the envelope.

**Divert and sort:** Control your production priorities and drive your system based on business needs. Enhanced functionality allows you to automatically divert mail packages, rank important deliveries, and organize output for efficient distribution.

**Precise packages:** Inline verification automatically weighs each package or checks the thickness of each piece to verify that the envelope has the correct cards, carriers, and inserts for each cardholder — every time.

# Complete source for stand-alone card delivery

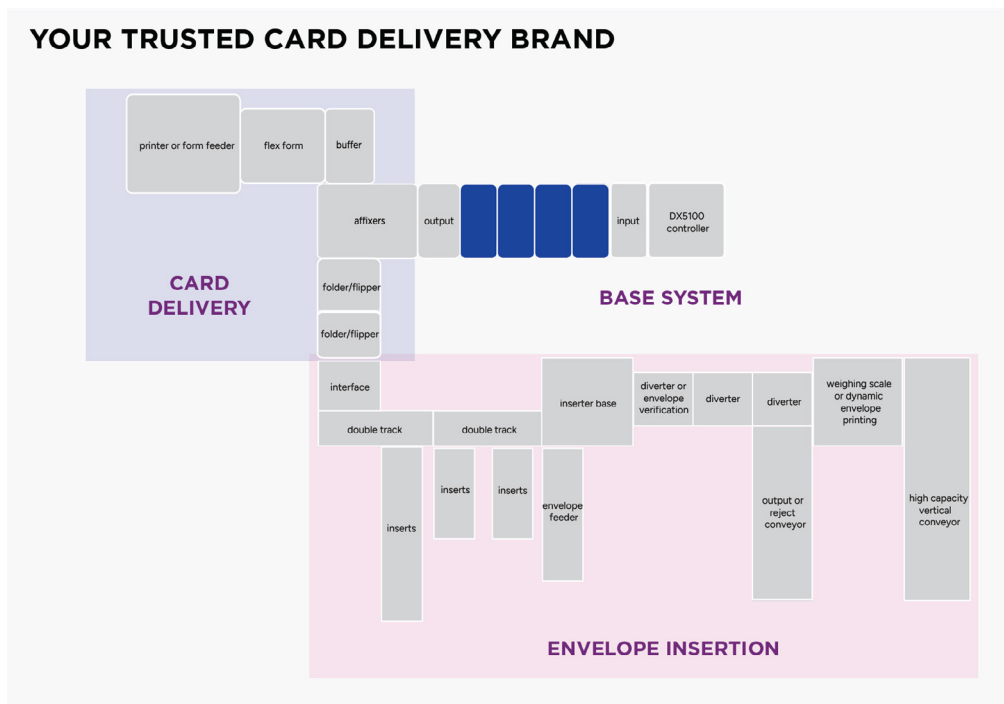


**DX5100 Card Delivery System**

# DATACARD DX SERIES SYSTEMS

## DX5100™

DX5100 System Specifications	
Rated Speed	Up to 3,500 CPH
Operating System	Microsoft® Windows® 10 IOT 2021 LTSC
Template Management	Microsoft Word 2019
Printer-Ready Data	PCL (black & white), Postscript (color), PDF
Electrical Requirements	Card modules: 230V, 50/60Hz, 15 Amps; Form modules: 230V, 50/60Hz, 30 Amps Inserter modules: 230V, 50/60Hz, 30 Amps
Operating Requirements	Room temperature: 65° to 80° F (18° to 27° C); Humidity: 35% to 85% (non-condensing) Recommend service area around system be at least 36" (76.2 cm) to help provide adequate airflow. See module data sheets for specific information.
Storage Requirements	Room temperature: 50° to 130° F (10° to 54° C); Humidity: 0% to 85% (non-condensing)
Agency Approvals	FCC, UL, cUL, CE, and RoHS Compliant
Card Types Supported	ISO/IEC 7810 ID-1 Size; 30 mil (±10%)
Card Materials Supported	All card materials can be processed, including PVC, composite, polycarbonate, ABS, PET, and PETG. Limitations may exist for each card delivery technology.
Paper Types Supported	24-32 lb. bond (90-131 gsm); 24-28 lb. bond (90-105 gsm) with Flex-form; Refer to Datacard Card Delivery Paper/Envelope Guidelines for additional information.



## ABOUT ENTRUST

Entrust fights fraud and cyber threats with identity-centric security that protects people, devices, and data. Our comprehensive solutions help organizations secure every step of the identity lifecycle, from verifying identity at onboarding to securing connections and fighting fraud in everyday transactions. Ongoing monitoring supports compliance and safeguards keys, secrets, and certificates. With a foundation of identity-centric security, our customers can transact and grow with confidence. Entrust has a global partner network and supports customers in over 150 countries.

For more information, visit [www.entrust.com](http://www.entrust.com).

Learn more about the DX Series at [entrust.com](http://entrust.com)

©2026 Entrust Corporation. All rights reserved. Entrust, Datacard, and the hexagon logo are trademarks, registered trademarks, and/or service marks of Entrust Corporation in the U.S. and/or other countries. All other brand or product names are the property of their respective owners. CD25Q2-dx5100-card-delivery-system-overview-sb

[entrust.com](http://entrust.com) Toll-Free: 888.690.2424 | International: +1.952.933.1223 | [sales@entrust.com](mailto:sales@entrust.com)

